



The hygienic solution

Optima 850 i



The perfect hygienic solution

Optima 850 i is perfect for the specific needs of heavy duty catering kitchens, and ideal for the highest hygienic standards required in hospitals, care homes, fast food outlets and in high class gastronomy businesses!

Variety

With 5 different designs the planning and installation of Optima 850 I is both easy and cost-effective: „installation bridge“, „wall installation“, „wall standing“, „wall hanging“ or „hanging from the ceiling“. All of the heavy duty appliances within the thermal MKN Optima 850 product line can be individually incorporated. More than 240 electric and gas appliances can be freely combined.

Stringent hygiene demands

MKN Optima 850 I is equipped with the largest possible floor clearance (up to 500 mm depending on appliance type) and is made completely of high-grade chromenickel steel. MKN Optima 850 I can therefore convince planners, investors and users of its easiness to clean, reliability and durability.

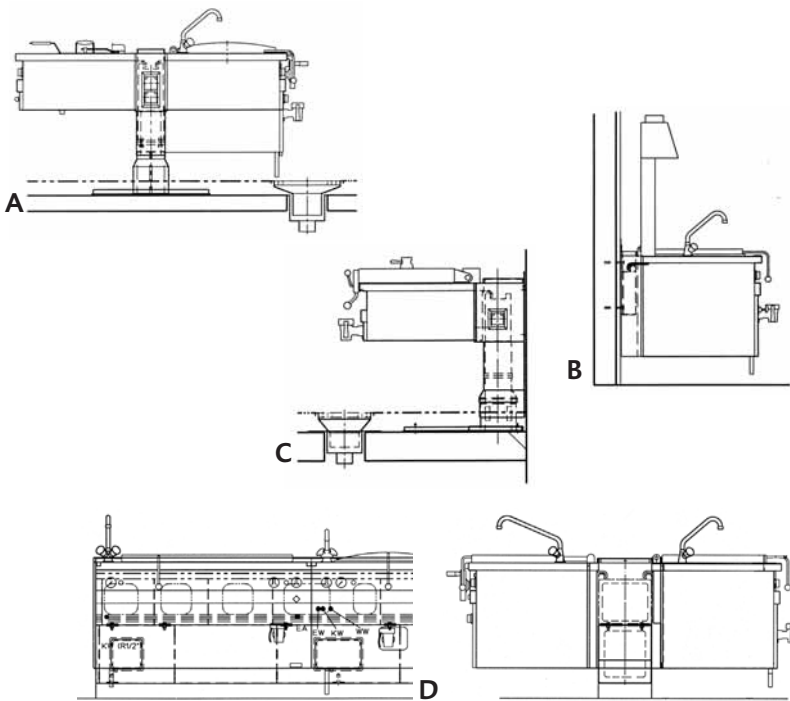
Durable and successful

Optima 850 i appliances are extremely maintenance-friendly and offer reliable, high appliance and operational safety even in the case of continuous heavy duty use.





Optima 850 i



Standard versions

- A Bridge installation
- B Hanging wall installation
- C Standing wall installation
- D Wall installation
- E Hanging from the ceiling (on request)
Complete floor clearance.

Significant advantages

A large product range of MKN Optima 850 appliances: all electric and gas appliances can be combined individually

Optima 850i, installation bridge made completely of chrome-nickel steel.

Single components interchangeable

Simple planning with modular system

Low installation and maintenance costs due to the MKN special fixing system.

Easy to clean due to of flat line construction and avoidance of unnecessary corners and joints.

Tightly welded top plate.

Connecting system at the same level.

Highly efficient and reliable

Can be supplied ready for connection to an on site power optimising system.





Large product range

There is a large choice of appliances from the Optima 850i thermal series for the planning and assembly of off floor kitchen blocks. The sum of the appliance widths (up to 6000 mm on two supporting feet), is calculated by the combination of single MKN Optima 850i appliances. The advantages of MKN installation bridges can be used for appliance widths up to 3000 mm, with hygiene advantages because of mounting on just one standing column.

Electric		
MKN-Nr.	Description	Dimensions (WxDxH) mm
RANGES		
3023501	Electric Range with 2-zone hob	400 x 850 x 400 mm
3023501 A	Electric Range with 2-zone hob, hard-chrome plated	400 x 850 x 400 mm
3023502	Electric Range with 4-zone hob	800 x 850 x 400 mm
3023502 A	Electric Range with 4-zone hob, hard-chrome plated	800 x 850 x 400 mm
3023503	Electric Range with 4-zone hob and electric oven	800 x 850 x 400 mm
3023503 A	Electric Range with 4-zone hob, hard-chrome plated and electric oven	800 x 850 x 400 mm
3023409	Electric ceramic range VITRO 2 x 270	500 x 850 x 400 mm
3023405	Electric ceramic range 4 x 270	800 x 850 x 400 mm
3023406	Electric range VITRO 4 x 270 and electric oven	800 x 850 x 400 mm
3023104	Electric Induktion range 2-zone	400 x 850 x 400 mm
3023105	Electric Induktion range 4-zone	800 x 850 x 400 mm
3023107	Electric surface induction range 2 x 5 kW	500 x 850 x 400 mm
3023108	Electric surface induction range 2 x 7 kW	500 x 850 x 400 mm
3023109	Electric surface induction range 4 x 5 kW	800 x 850 x 400 mm
3023110	Electric surface induction range 4 x 7 kW	800 x 850 x 400 mm
3023111	Electric surface induction island range	500 x 850 x 400 mm
DEEP FAT FRYERS		
3020325	Electric deep fat fryer London II	600 x 850 x 400 mm
3020325 B	Electric deep fat fryer London II, LE	600 x 850 x 400 mm
3020327	Electric deep fat fryer London II, with EcoControl, electronic regulation	600 x 850 x 400 mm
3020327 B	Electric deep fat fryer London II, LE with EcoControl, electronic regulation	600 x 850 x 400 mm
3020330	Electric deep fat fryer Paris	600 x 850 x 400 mm
3020330 B	Electric deep fat fryer Paris, LE	600 x 850 x 400 mm
3020329	Electric deep fat fryer Paris with EcoControl, electronic regulation	600 x 850 x 400 mm
3020329 B	Electric deep fat fryer Paris, LE with EcoControl, electronic regulation	600 x 850 x 400 mm
3020310	Electric Industrial deep fat fryer Köln (Cologne) with lifting motor on the left	1000 x 850 x 700 mm
3020310 A	Electric Industrial deep fat fryer Köln (Cologne) with lifting motor on the left and emptying system on the right	1800 x 850 x 700 mm
3020314	Electric industrial deep fat fryer Köln (Cologne) with lifting motor on the left and EcoControl, electronic regulation	1000 x 850 x 700 mm
3020314 A	Electric industrial deep fat fryer Köln (Cologne) with lifting motor on the left, emptying system on the right and EcoControl, electronic regulation	1800 x 850 x 700 mm
3020311	Electric industrial deep fat fryer Köln (Cologne) with lifting motor on the right	1000 x 850 x 700 mm
3020311 A	Electric industrial deep fat fryer Köln (Cologne) with lifting motor on the right and emptying system on the left	1800 x 850 x 700 mm
3020315	Electric industrial deep fat fryer Köln (Cologne) with lifting motor on the right and EcoControl, electronic regulation	1000 x 850 x 700 mm
3020315 A	Electric industrial deep fat fryer Köln (Cologne) with lifting motor on the right, emptying system on the left and EcoControl, electronic regulation	1800 x 850 x 700 mm
GRIDDLE PLATES		
3021134 A	Electric Griddle Plate 3/4, with PowerBlock	400 x 850 x 400 mm
3021126	Electric Griddle Plate I	600 x 850 x 400 mm
3021126 A	Electric Griddle Plate I, with PowerBlock	600 x 850 x 400 mm
3021128 A	Electric Griddle Plate I, with PowerBlock and EcoControl, electronic regulation	600 x 850 x 400 mm
3021127	Electric Griddle Plate I, half ribbed	600 x 850 x 400 mm
3021127 A	Electric Griddle Plate I, half ribbed, and chrome nickel steel	600 x 850 x 400 mm
3021129 A	Electric Griddle Plate I, half ribbed, and chrome nickel steel and EcoControl, electric regulation	600 x 850 x 400 mm
3021139 A	Electric Griddle Plate I, full ribbed, chrome nickel steel	600 x 850 x 400 mm
3021140 A	Electric Griddle Plate I, full ribbed, chrome nickel steel and EcoControl, electric regulation	600 x 850 x 400 mm
3021130	Electric Griddle Plate II	800 x 850 x 400 mm
3021130 A	Electric Griddle Plate II, with PowerBlock	800 x 850 x 400 mm
3021132 A	Electric Griddle Plate II, with PowerBlock and EcoControl, electronic regulation	800 x 850 x 400 mm
3021131	Electric Griddle Plate II, half ribbed	800 x 850 x 400 mm
3021131 A	Electric Griddle Plate II, half ribbed, and chrome nickel steel	800 x 850 x 400 mm
3021133 A	Electric Griddle Plate II, half ribbed, and chrome nickel steel and EcoControl, electric regulation	800 x 850 x 400 mm
3021141 A	Electric Griddle Plate II, full ribbed, chrome nickel steel	800 x 850 x 400 mm
3021142 A	Electric Griddle Plate II, full ribbed, chrome nickel steel and EcoControl, electric regulation	800 x 850 x 400 mm

Electric

MKN-Nr.	Description	Dimensions (WxDxH) mm
Griddle Pans		
3022507	Electric griddle pan I	600 x 850 x 400 mm
3022508	Electric griddle pan I, EcoControl, electric regulation	600 x 850 x 400 mm
3022509	Electric griddle pan II	800 x 850 x 400 mm
3022510	Electric griddle pan II, EcoControl, electric regulation	800 x 850 x 400 mm
BAINMARIE, COOK MARIE, PASTA COOKER		
3020505	Electric bainmarie 1/1 GN	400 x 850 x 400 mm
3020501	Electric bainmarie 2/1 GN	800 x 850 x 400 mm
3020402	Electric pasta cooker	400 x 850 x 400 mm
3020406 A	Electric pasta cooker with lifting gear	400 x 850 x 400 mm
TILTING BRATT PAN		
3021402	Electric tilting bratt pan 2/1 GN with motorised tilting	800 x 850 x 700 mm
3021402 A	Electric tilting bratt pan 2/1 GN with motorised tilting and PowerBlock	800 x 850 x 700 mm
3021402 B	Electric tilting bratt pan 2/1 GN with motorised tilting and double walled hinged lid	800 x 850 x 700 mm
3021402 C	Electric tilting bratt pan 2/1 GN with motor. tilt., PowerBlock and double walled hinged lid	800 x 850 x 700 mm
3021408	Electric tilting bratt pan 3/1 GN with motorised tilting	1100 x 850 x 700 mm
3021408 A	Electric tilting bratt pan 3/1 GN with motorised tilting and PowerBlock	1100 x 850 x 700 mm
3021408 B	Electric tilting bratt pan 3/1 GN with motorised tilting and double walled hinged lid	1100 x 850 x 700 mm
3021408 C	Electric tilting bratt pan 3/1 GN with motor. tilt., PowerBlock and double walled hinged lid	1100 x 850 x 700 mm
3021440 B	Electric tilting bratt pan 2/1 GN manual tilting	1300 x 850 x 400 mm
3021440 C	Electric tilting bratt pan 2/1 GN manual tilting and PowerBlock	1300 x 850 x 400 mm
3021442 B	Electric tilting bratt pan 2/1 GN with motorised tilting	1300 x 850 x 400 mm
3021442 C	Electric tilting bratt pan 2/1 GN with motorised tilting and PowerBlock	1300 x 850 x 400 mm
3021444 B	Electric tilting bratt pan 3/1 GN manual tilting	1600 x 850 x 400 mm
3021444 C	Electric tilting bratt pan 3/1 GN manual tilting and PowerBlock	1600 x 850 x 400 mm
3021446 B	Electric tilting bratt pan 3/1 GN with motorised tilting	1600 x 850 x 400 mm
3021446 C	Electric tilting bratt pan 3/1 GN with motorised tilting and PowerBlock	1600 x 850 x 400 mm
BRATT PAN MAGNUM		
3022701	Electric bratt pan magnum 2/1 GN	1000 x 850 x 400 mm
3022703	Electric bratt pan magnum 2/1 GN - 300	1000 x 850 x 700 mm
3022705	Electric bratt pan magnum 3/1 GN	1300 x 850 x 400 mm
3022707	Electric bratt pan magnum 3/1 GN - 300	1300 x 850 x 700 mm
3021441 C	Electric tilting bratt pan magnum 2/1 GN manual tilting	1300 x 850 x 700 mm
3021443 C	Electric tilting bratt pan magnum 2/1 GN motorised tilting	1300 x 850 x 700 mm
3021449 C	Electric tilting bratt pan magnum 2/1 GN - 300 manual tilting	1300 x 850 x 700 mm
3021451 C	Electric tilting bratt pan magnum 2/1 GN - 300 motorised tilting	1300 x 850 x 700 mm
3021445 C	Electric tilting bratt pan magnum 3/1 GN manual tilting	1600 x 850 x 700 mm
3021447 C	Electric tilting bratt pan magnum 3/1 GN motorised tilting	1600 x 850 x 700 mm
3021453 C	Electric tilting bratt pan magnum 3/1 GN - 300 manual tilting	1600 x 850 x 700 mm
3021455 C	Electric tilting bratt pan magnum 3/1 GN - 300 manual tilting	1600 x 850 x 700 mm
PRESSURE BRATT PAN		
3024101	Electric pressure bratt pan 2/1 GN	1100 x 850 x 400 mm
3024103	Electric pressure bratt pan 2/1 GN - 300	1100 x 850 x 700 mm
3024102	Electric pressure bratt pan 3/1 GN	1400 x 850 x 400 mm
3024104	Electric pressure bratt pan 3/1 GN - 300	1400 x 850 x 700 mm
3024201	Electric tilting pressure bratt pan 2/1 GN manual tilting	1300 x 850 x 700 mm
3024202	Electric tilting pressure bratt pan 2/1 GN motorised tilting	1300 x 850 x 700 mm
3024205	Electric tilting pressure bratt pan 2/1 GN - 300 manual tilting	1300 x 850 x 700 mm
3024206	Electric tilting pressure bratt pan 2/1 GN - 300 motorised tilting	1300 x 850 x 700 mm
3024203	Electric tilting pressure bratt pan 3/1 GN manual tilting	1600 x 850 x 700 mm
3024204	Electric tilting pressure bratt pan 3/1 GN motorised tilting	1600 x 850 x 700 mm
3024207	Electric tilting pressure bratt pan 3/1 GN - 300 manual tilting	1600 x 850 x 700 mm
3024208	Electric tilting pressure bratt pan 3/1 GN - 300 motorised tilting	1600 x 850 x 700 mm



Electric / Steam

MKN-Nr.	Description	Dimensions (WxDxH) mm
QUICK BOILING KETTLE, BOILING KETTLE		
3022802B	Electric quick boiling kettle 60 L	800 x 850 x 700 mm
3022812	Electric quick boiling kettle 60 L EcoControl, electric regulation	800 x 850 x 700 mm
3022804B	Electric quick boiling kettle 100 L	800 x 850 x 700 mm
3022813	Electric quick boiling kettle 100 L EcoControl, electric regulation	800 x 850 x 700 mm
3022805B	Electric quick boiling kettle 150 L	1000 x 850 x 700 mm
3022814	Electric quick boiling kettle 150 L EcoControl, electric regulation	1000 x 850 x 700 mm
3023003B	Electric tilting quick boiling kettle 60 L manual tilting	1100 x 850 x 400 mm
3023004B	Electric tilting quick boiling kettle 60 L motorised tilting	1100 x 850 x 400 mm
3023022	Electric tilting quick boiling kettle 60 L motorised tilting and EcoControl, electric regulation	1100 x 850 x 400 mm
3023007B	Electric tilting quick boiling kettle 100 L manual tilting	1200 x 850 x 400 mm
3023008B	Electric tilting quick boiling kettle 100 L motorised tilting	1200 x 850 x 400 mm
3023024	Electric tilting quick boiling kettle 100 L motorised tilting and EcoControl, electric regulation	1200 x 850 x 400 mm
3023009B	Electric tilting quick boiling kettle 150 L manual tilting	1300 x 850 x 400 mm
3023010B	Electric tilting quick boiling kettle 150 L motorised tilting	1300 x 850 x 400 mm
3023026	Electric tilting quick boiling kettle 150 L motorised tilting and EcoControl, electric regulation	1300 x 850 x 400 mm
3023017B	Electric tilting quick boiling kettle 200 L manual tilting	1300 x 850 x 400 mm
3023018B	Electric tilting quick boiling kettle 200 L motorised tilting	1300 x 850 x 400 mm
3023028	Electric tilting quick boiling kettle 200 L motorised tilting and EcoControl, electric regulation	1300 x 850 x 400 mm
3022831	Electric quick boiling kettle I (rectangular)	800 x 850 x 700 mm
3022833	Electric quick boiling kettle I (rectangular) and EcoControl, electric regulation	800 x 850 x 700 mm
3022832	Electric quick boiling kettle II (rectangular)	1000 x 850 x 700 mm
3022834	Electric quick boiling kettle I (rectangular) and EcoControl, electric regulation	1000 x 850 x 700 mm
3022908	Electric quick boiling kettle I (rectangular)	1400 x 850 x 700 mm
3022910	Electric quick boiling kettle I (rectangular) and EcoControl, electric regulation	1400 x 850 x 700 mm
3012802B	Steam quick boiling kettle 60 L	800 x 850 x 700 mm
3012812	Steam quick boiling kettle 60 L and EcoControl, electric regulation	800 x 850 x 700 mm
3012804B	Steam quick boiling kettle 100 L	800 x 850 x 700 mm
3012813	Steam quick boiling kettle 100 L and EcoControl, electric regulation	800 x 850 x 700 mm
3012805B	Steam quick boiling kettle 150 L	1000 x 850 x 700 mm
3012814	Steam quick boiling kettle 150 L and EcoControl, electric regulation	1000 x 850 x 700 mm
3013003B	Steam tilting quick boiling kettle 60 L manual tilting	1100 x 850 x 400 mm
3013004B	Steam tilting quick boiling kettle 60 L motorised tilting	1100 x 850 x 400 mm
3013022	Steam tilting quick boiling kettle 60 L motorised tilting and EcoControl, electric regulation	1100 x 850 x 400 mm
3013007B	Steam tilting quick boiling kettle 100 L manual tilting	1200 x 850 x 400 mm
3013008B	Steam tilting quick boiling kettle 100 L motorised tilting	1200 x 850 x 400 mm
3013024	Steam tilting quick boiling kettle 100 L motorised tilting and EcoControl, electric regulation	1200 x 850 x 400 mm
3013009B	Steam tilting quick boiling kettle 150 L manual tilting	1300 x 850 x 400 mm
3013010B	Steam tilting quick boiling kettle 150 L motorised tilting	1300 x 850 x 400 mm
3013026	Steam tilting quick boiling kettle 150 L motorised tilting and EcoControl, electric regulation	1300 x 850 x 400 mm
3013017B	Steam tilting quick boiling kettle 200 L manual tilting	1300 x 850 x 400 mm
3013018B	Steam tilting quick boiling kettle 200 L motorised tilting	1300 x 850 x 400 mm
3013028	Steam tilting quick boiling kettle 200 L motorised tilting and EcoControl, electric regulation	1300 x 850 x 400 mm
3012831	Steam quick boiling kettle I (rectangular)	800 x 850 x 700 mm
3012833	Steam quick boiling kettle I (rectangular) with EcoControl, electric regulation	800 x 850 x 700 mm
3012832	Steam quick boiling kettle I (rectangular)	1000 x 850 x 700 mm
3012834	Steam quick boiling kettle I (rectangular) with EcoControl, electric regulation	1000 x 850 x 700 mm
3012908	Steam quick boiling kettle I (rectangular)	1400 x 850 x 700 mm
3012910	Steam quick boiling kettle I (rectangular) with EcoControl, electric regulation	1400 x 850 x 700 mm
ELECTRIC QUICK BOILING KETTLE WITH AGITATOR AND COOLING MODULE		
3022827	Electric quick boiling kettle 150 L with agitator	1000 x 850 x 700 mm
3022828	Electric quick boiling kettle 150 L with agitator and cooling module	1400 x 850 x 700 mm
3022829	Electric quick boiling kettle 150 L with agitator, cooling circulation on site	1000 x 850 x 700 mm
3012827	Steam quick boiling kettle 150 L with agitator	1000 x 850 x 700 mm
3012828	Steam quick boiling kettle 150 L with agitator and cooling module	1400 x 850 x 700 mm
3012829	Steam quick boiling kettle 150 L with agitator, cooling circulation on site	1000 x 850 x 700 mm

Electric / steam

MKN-Nr.	Description	Dimensions (WxDxH) mm
PRESSURE COOKING KETTLE		
3023901	Electric pressure cooking kettle I	800 x 850 x 700 mm
3023902	Electric pressure cooking kettle II	1000 x 850 x 700 mm
3023903	Electric pressure cooking kettle III	1400 x 850 x 700 mm
3013901	Steam pressure cooking kettle I	800 x 850 x 700 mm
3013902	Steam pressure cooking kettle II	1000 x 850 x 700 mm
3013903	Steam pressure cooking kettle III	1400 x 850 x 700 mm

WORK TABLE

3003702	work table 400	400 x 850 x 400 mm
3003705	work table 500	500 x 850 x 400 mm
3003701	work table 600	600 x 850 x 400 mm
3003703	work table 800	800 x 850 x 400 mm
3003704	work table 1200	1200 x 850 x 400 mm

GAS

RANGES

3063401	Gas range with 2 burners	400 x 850 x 400 mm
3063402	Gas range with 4 burners	800 x 850 x 400 mm
3063405	Gas range with 6 burners	1200 x 850 x 400 mm
3063501	Gas solid top range	800 x 850 x 400 mm

GRIDDLE PLATES

3061101	Gas griddle plate I	600 x 850 x 400 mm
3061102	Gas griddle plate I, half ribbed	600 x 850 x 400 mm
3061107	Gas griddle plate II	1000 x 850 x 400 mm
3061107 A	Gas griddle plate II, half ribbed	1000 x 850 x 400 mm

TILTING BRATT PANS

3061440 B	Gas tilting bratt pan 2/1 GN manual tilting	1300 x 850 x 400 mm
3061440 C	Gas tilting bratt pan 2/1 GN manual tilting, chrome nickel steel	1300 x 850 x 400 mm
3061442 B	Gas tilting bratt pan 2/1 GN motorised tilting	1300 x 850 x 400 mm
3061442 C	Gas tilting bratt pan 2/1 GN motorised tilting, chrome nickel steel	1300 x 850 x 400 mm
3061444 B	Gas tilting bratt pan 3/1 GN manual tilting	1600 x 850 x 400 mm
3061444 C	Gas tilting bratt pan 3/1 GN manual tilting, chrome nickel steel	1600 x 850 x 400 mm
3061446 B	Gas tilting bratt pan 3/1 GN motorised tilting	1600 x 850 x 400 mm
3061446 C	Gas tilting bratt pan 3/1 GN motorised tilting, chrome nickel steel	1600 x 850 x 400 mm

GAS QUICK BOILING KETTLE, BOILING KETTLE

3062835	Gas quick boiling kettle 60 L	800 x 850 x 700 mm
3062838	Gas quick boiling kettle 60 L, EcoControl	800 x 850 x 700 mm
3062836	Gas quick boiling kettle 100 L	800 x 850 x 700 mm
3062839	Gas quick boiling kettle 100 L, EcoControl	800 x 850 x 700 mm
3062837	Gas quick boiling kettle 150 L	1000 x 850 x 700 mm
3062840	Gas quick boiling kettle 150 L, EcoControl	1000 x 850 x 700 mm
3062831	Gas boiling kettle I (rectangular)	800 x 850 x 700 mm
3062833	Gas boiling kettle I (rectangular), Eco Control, electric regulation	800 x 850 x 700 mm
3062832	Gas boiling kettle II (rectangular)	1000 x 850 x 700 mm
3062834	Gas boiling kettle II (rectangular), EcoControl, electric regulation	1000 x 850 x 700 mm
3062908	Gas boiling kettle III (rectangular)	1400 x 850 x 700 mm
3062910	Gas boiling kettle III (rectangular), Eco Control, electric regulation	1400 x 850 x 700 mm